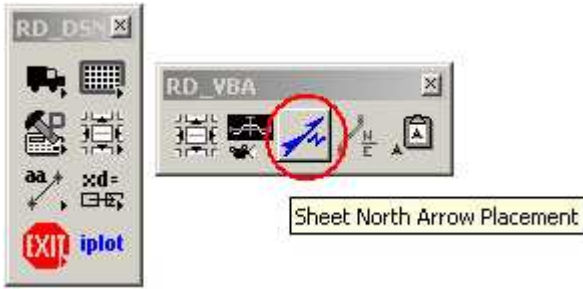


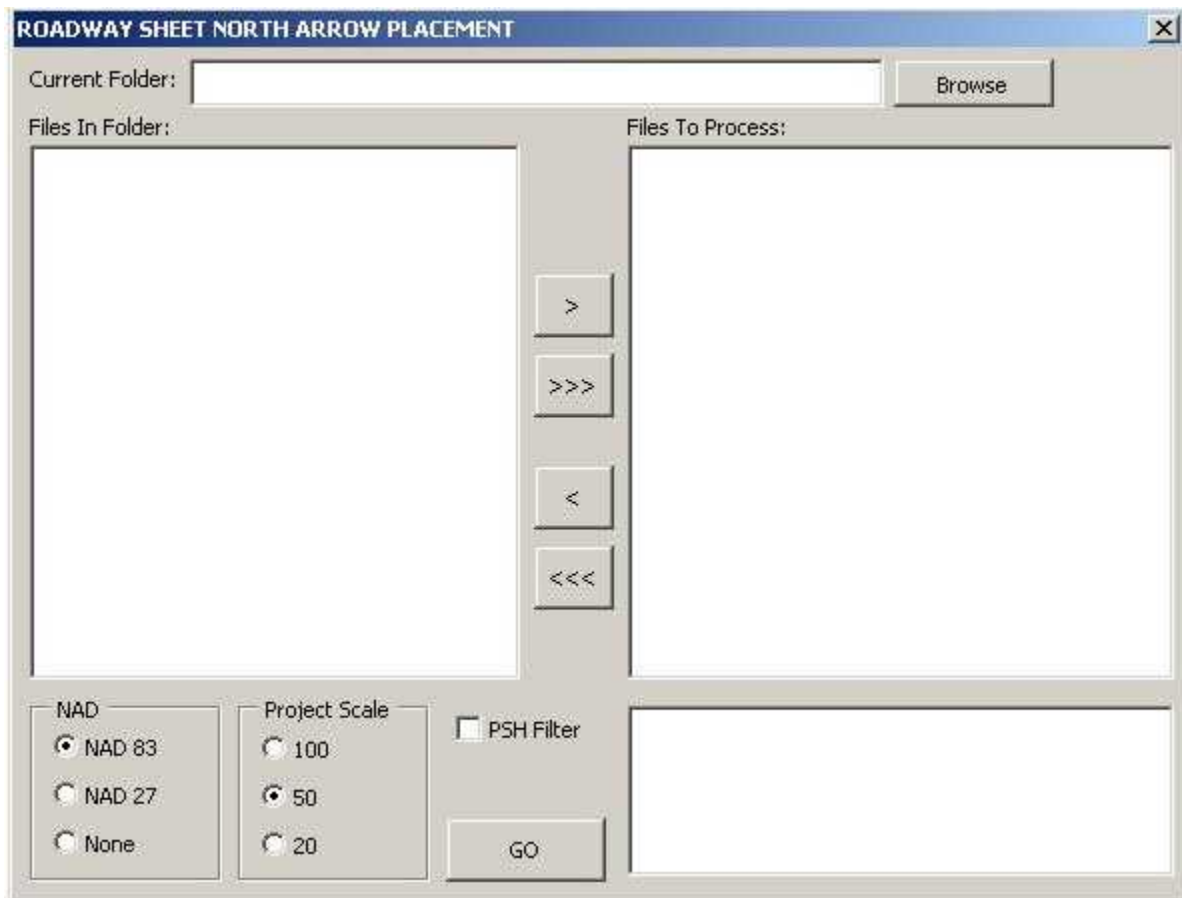
SHEET NORTH ARROW PLACEMENT

Activation

The program can be launch from the RD_DSN toolbox. through the RD_DSN tool frame, RD_VBA tool family.



Initial State



Current Folder

After the application has been loaded, click on the Browse button to select the location of the folder where the plan sheet files (PSH) are. Notice the messages in the lower left corner that will guide you through the program.



Files In Folder

These are the list of Microstation DGN files found under the Current Folder selection.

Files To Process

Microstation DGN files to place the north arrow cell in. Mostly Roadway Plan Sheet files (PSH).



Move Selected Files for Processing

Selected files in the Files In Folder list will be moved to the Files To Process list.



Move All Files for Processing

All files in the Files In Folder list will be moved to the Files To Process list.



Remove Selected Files from Processing

Selected files in the Files To Process list will be moved to the Files In Folder list.



Remove All Files from Processing

All files in the Files To Process list will be moved to the Files In Folder list.

Note that double clicking on a file will also move the file from one list to the other list.

NAD - North American Datum MSL Datum Year

North arrow cell to be placed.

- NAD83 (1983)
- NAD27 (1927)
- None (North arrow cell with no NAD designation)

Project Scale

Determine the size of north arrow cells. Project scale is equivalent to plot scale at full size plan sheets (22"x34").

PSH Filter

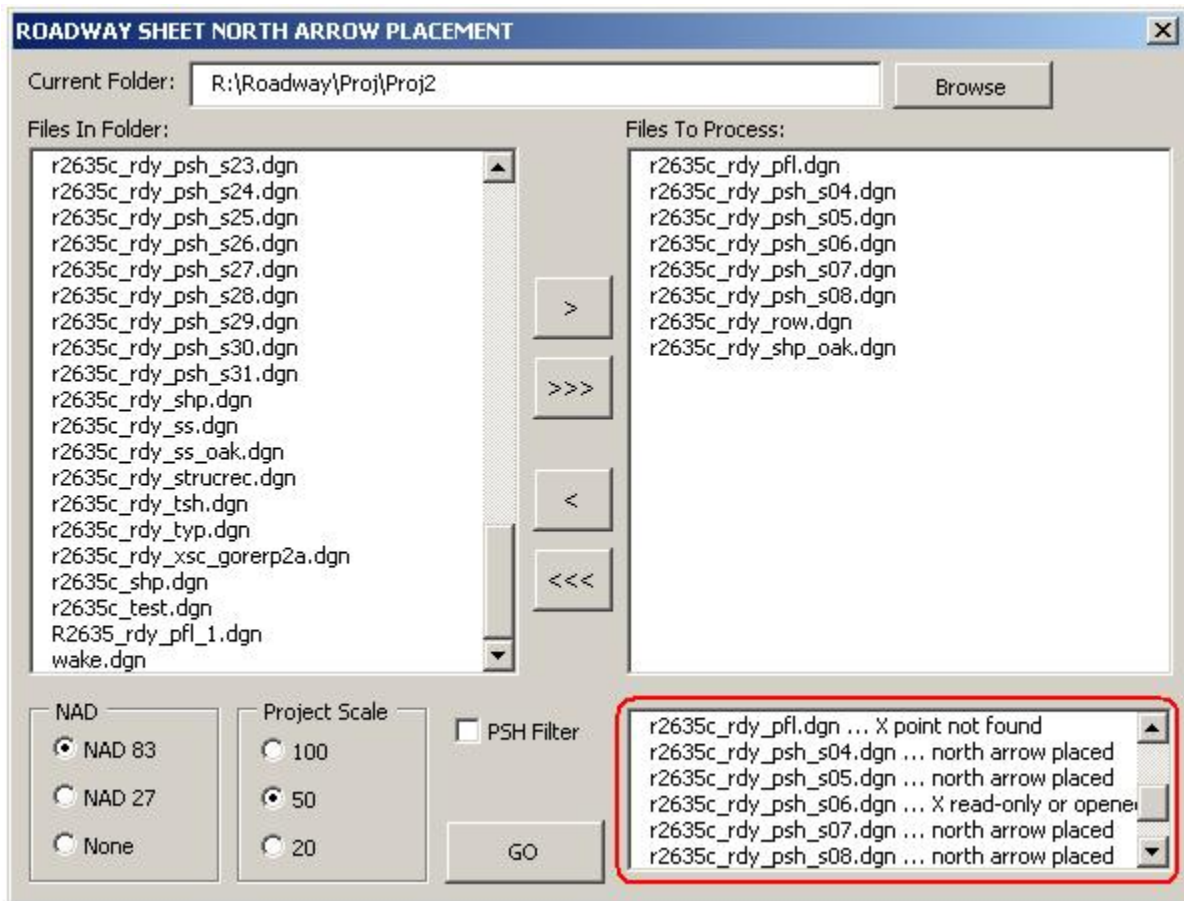
Toggle to display only Roadway plan sheet (PSH) file type files in the Files In Folder list (i.e. R2007_RDY_PSH_S04.DGN).

GO

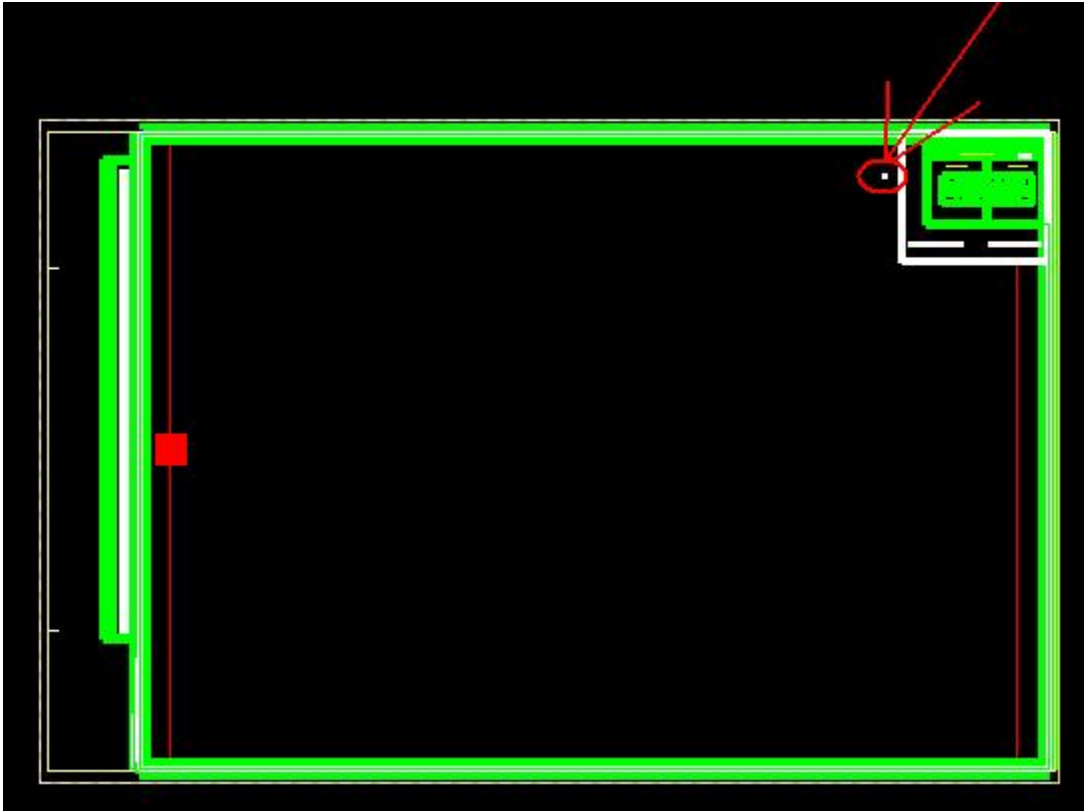
Process all the file in the Files To Process list in order. During processing, in the lower left corner of the screen, the status of the processing is displayed.



Once completed, the a log of the event is displayed to the right of the GO button.



For each file in the list to be processed, the program will open each file and scan for a point on level "Sheet North Arrow Point CELL". The newer plan sheet cells as of February 26, 2007 will have this point located in the upper right corner.



If the file is read only or is opened, then the program will go to the next file on the list.

If the new plan sheet cell is still a cell, complex status has not been dropped, then the program will drop the complex status of the plan sheet cell once, and then continue to scan for the north arrow point.

If the new plan sheet cell complex status has already been dropped, then the program will automatically scan for the north arrow point.

If the north arrow point is found, then the appropriate north arrow cell is placed on the point once. Rotation of the north arrow is to North, or top view. The file is then saved.



If the north arrow point is not found, then no north arrow cell is placed.

The file is then closed and the program goes to the next file on the list until all files have been processed.

Note that if the Geopak Plan and Profile Sheet Layout program have been used to create the plan sheet files, for clip sheets option, use "Rotate View" for plan sheets. For profile sheets, use "Rotate Reference".